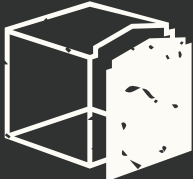


IRON FIREMAN

• COLLECTIVE •

EST.  2016

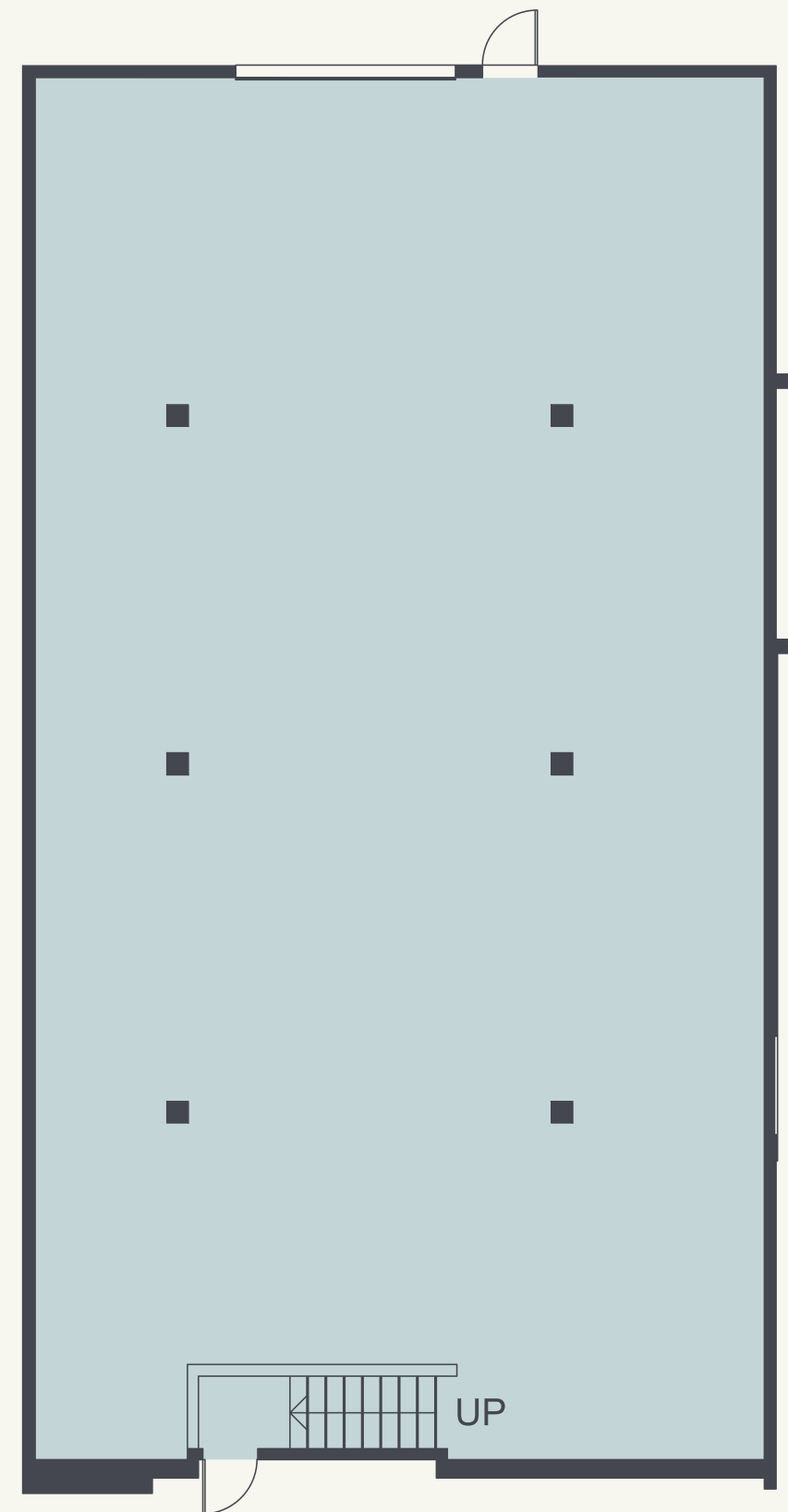
FLOOR PLANS

SPACE #135

3,623 SF*

FEATURES:

- Concrete flooring
- 3-phase power with 100A electrical panel, outlets and building standard lighting
- Gyp board walls with level 3 finish to 10 feet
- Egress lighting
- Dedicated grade level roll-up door
- Extensive natural light



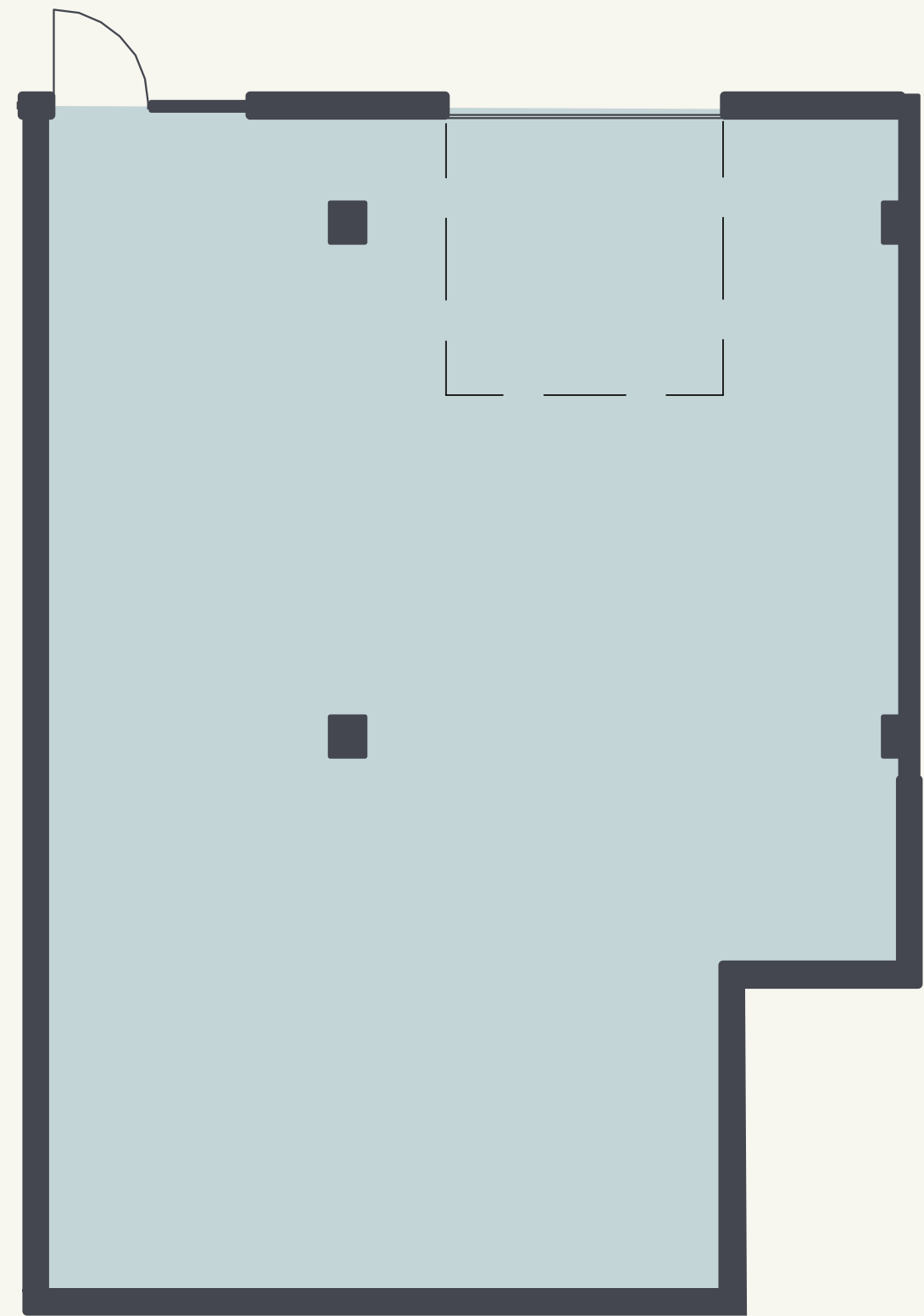
*Square footage is approximate

SPACE #141

1,337 SF*

FEATURES:

- Concrete flooring
- 3-phase power with 100A electrical panel, outlets and building standard lighting
- Gyp board walls with level 3 finish to 10 feet
- Egress lighting
- Dedicated grade level roll-up door



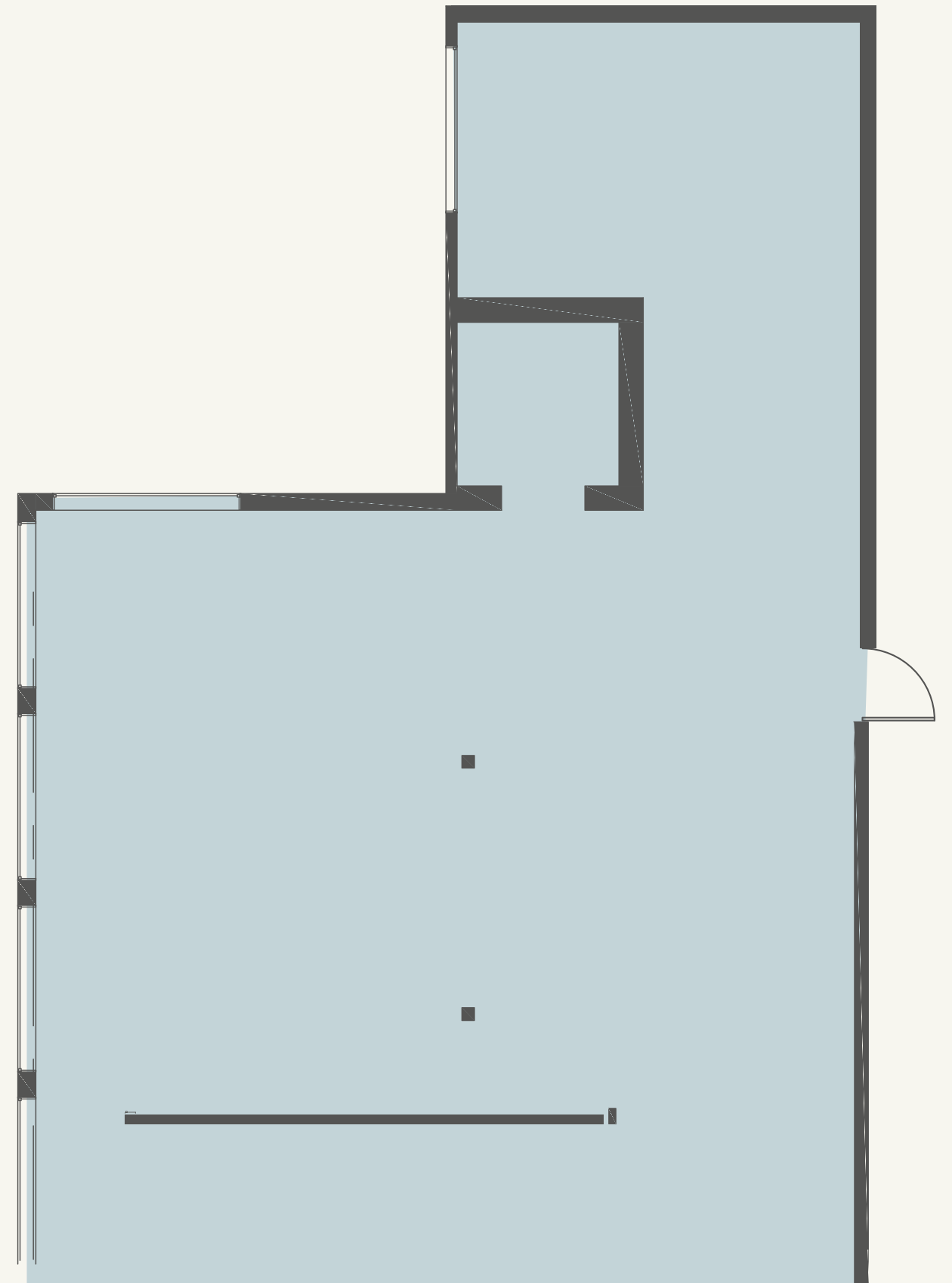
*Square footage is approximate

SPACE #210

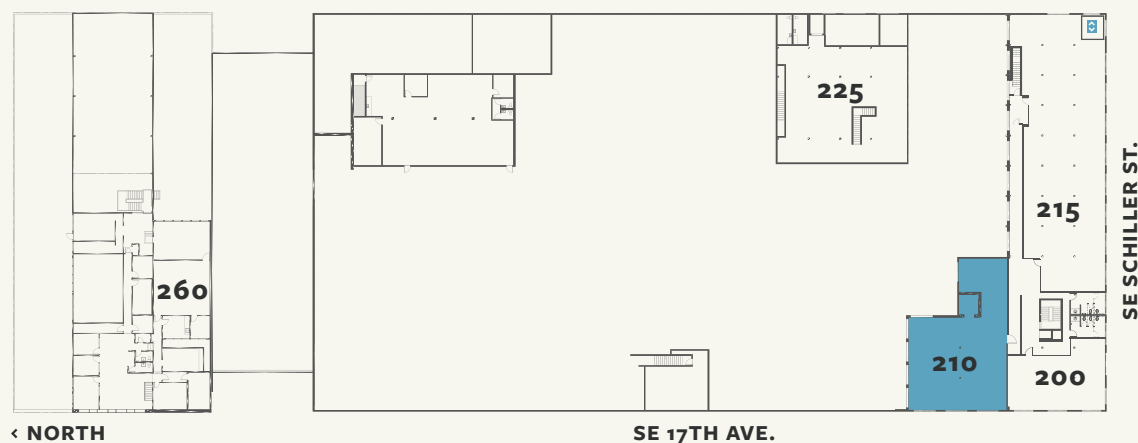
3,582 SF*

FEATURES:

- Wood flooring
- 3-phase power with 100A electrical panel, outlets and building standard lighting
- Extensive natural light
- Sandblasted columns and beams
- Exposed brick



*Square footage is approximate



FOR LEASING INFORMATION:

SCOTT MACLEAN

scott.macleam@colliers.com

503 542-5891

J.T. SAND

jt.sand@colliers.com

503 542-5896